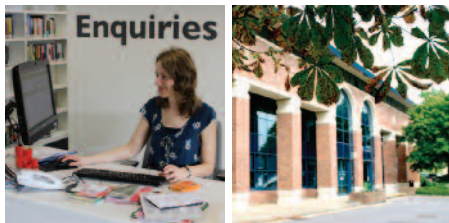


Visitor access to our Library Services

Visitor access to our Library Services



Introduction

The University of Chichester Library Service is committed to open access for staff and students and its wider communities. This leaflet aims to advise on access arrangements.

University of Chichester staff and students

All current University of Chichester staff and students have full access to the Library Service.

University of Chichester students who are intermitting or are preparing for study with us are welcome to use the Library (please note there is a £10 administration charge for pre-entry and intermitting students). Students who are continuing to study with us as PGCEs or MAs are entitled to Associate Membership, free of charge, until the start of their course.

Categories include:

- Bursary Students
- M Phil (Probationary) Students
- Pre-entry courses
- Intermitting students

Members of the public

All day visitors are asked to report to the reception desk. You may use all open access material for reference use only. We also offer a 'Walk-in Access' scheme for use of Microsoft Office, our electronic resources, and wi-fi access to the internet. Please bring a photo id if you require 'Walk-in Access'. If you wish to have borrowing rights then you may apply to become an Associate Member.

Visitor access to our Library Services

Associate membership

Annual fee: £25

This entitles the user to borrow 10 items at any one time. These items must be either the 28 day (Standard) or 7 day (Intermediate) loan types.

Academic visitors

Staff and students from over 170 university and higher education institutions in the UK and Ireland may use our libraries as SCONUL access visitors. Check the list of SCONUL access member libraries to ensure your institution participates.

Your printed e-mail confirmation plus your own institution's library card is required. For more details visit <http://www.sconul.ac.uk/sconul-access>.

Access to the UK Higher Education (Eduroam) wi-fi network is available for users from participating institutions and allows secure access to the Internet.

Alumni

All members of the University of Chichester Alumni Association may use the Library Service for reference purposes free of charge. Associate Membership is available at a reduced rate, (at date of printing £20 per annum).

For more details of the University alumni scheme visit <http://www.chi.ac.uk/study-us-0/alumni>

Retired members of staff

Retired members of staff from the University are entitled to Associate Member status free of charge.

Chichester diocese

Chichester Theological College and Diocesan Members:

- Former Chichester Theological College members
- Diocesan members of the See of Chichester
- Diocesan members of the See of Portsmouth

are all entitled to free Associate Membership in order to borrow items. We advise that new users bring proof of their identity or contact the Library prior to their first visit so that a library card can be prepared (email: leo@chi.ac.uk).

Corporate membership

Business, educational, and charitable organisations who wish more than one person to become members of the library can apply for Corporate Membership. This offers Associate Membership for a maximum of ten employees.

Please apply in writing to the Director of Learning and Information Services (details below). Once an application is approved, the organisation will be invoiced. After payment has been received, named members will be issued with a Library Associate Membership card providing access to our Libraries. Library cards are not transferable and individuals are responsible for items issued to them.

Corporate membership annual fee: £200

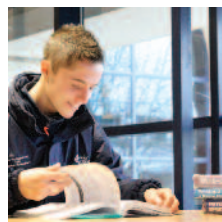
Collaborative partners

The University of Chichester has a number of partnerships with institutions which may allow access to Learning Resource Centres resources and facilities. These include:

- Chichester College
- West Dean College

Please apply in writing to the Director of Learning and Information Services:

Learning Resource Centre
Bishop Otter Campus
College Lane
Chichester
West Sussex
PO19 6PE



Partnership Schools

For the University of Chichester's current Partner Schools, the Library Service is pleased to provide Associate Membership for a maximum of ten staff members for £160 per annum.

Small schools may prefer to take discounted individual Associate Membership of £20 per annum per person. Please contact the library team at leo@chi.ac.uk if this is of interest to you.

Dome Enterprise Centre (DEC) Members

Dome Enterprise Centre (DEC) members are entitled to free Associate Membership.

Further information

For campus information, including details of our parking arrangements, please visit: www.chi.ac.uk

For more information on Library Services, please visit: <http://www.chi.ac.uk/study-us-0/why-chichester/campus-facilities/library-services>

Summary of fees

Category	Borrowing rights	Price
Day Visitors	No	n/a
Academic Visitors	Yes	Free
Alumni	Yes	£20
Chichester Diocese	Yes	Free
Retired staff	Yes	Free
Bursary Students	Yes	Free
M Phil (Probationary)	Yes	Free
Pre-entry courses	Yes	£10
Intermitting students	Yes	£10
Associate membership	Yes	£25
Corporate Membership	Yes	£200



Learning Resource Centre
Main Reception

Find out more

Tel: 01243 816222

Email: leo@chi.ac.uk

Web: www.chi.ac.uk

[twitter@chiunilib](https://twitter.com/chiunilib)

If you would like to view this publication in another format
(e.g. large print version) please contact the SIZ Desk.



Please recycle after use

leo@chi.ac.uk